



ClassDojo

3 steps to connect students

In class:

1. **Print it**

Print Student Login Poster (next page).

2. **Pin it**

Pin your Student Login Poster to a classroom wall, or one to each wall! Tip: Pin poster low enough for students to reach.

3. **Scan it**

From the app or classdojo.com, scan the QR code from the Student Login Poster. Students may need to log out of existing accounts.

At home:

Hand out individual QR codes (attached) so students can log in at home. Students can also log in directly from their parent's account.

Once students create accounts they'll be able to add to their portfolio, view feedback, and customize their monster!

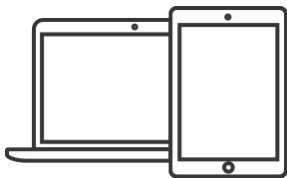


ClassDojo FS2 Red_Ms.Louise's Student Login Poster



Student instructions:

1



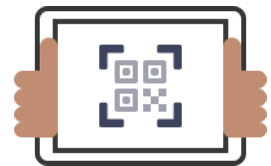
Download the ClassDojo app, or go to www.classdojo.com from a computer.

2



Enter as a student.

3



Scan the QR code above.